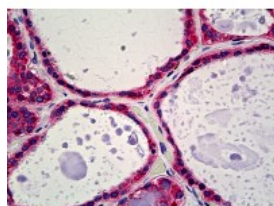




Calreticulin Antibody

CATALOG NUMBER: 51-865



Immunohistochemistry of human thyroid tissue stained using Calreticulin Antibody.

Specifications

SPECIES REACTIVITY:	Dog, Human, Mouse, Rat
TESTED APPLICATIONS:	IHC, IP, WB
APPLICATIONS:	Calreticulin antibody can be used in ELISA, and immunohistochemistry starting at 5 ug/mL.
USER NOTE:	Optimal dilutions for each application to be determined by the researcher.
IMMUNOGEN:	Recombinant protein derived from the C-Terminus of the calreticulin protein fused to GST
HOST SPECIES:	Sheep

Properties

PURIFICATION:	Ammonium Sulfate Precipitation
PHYSICAL STATE:	Liquid
BUFFER:	Provided as solution in phosphate buffered saline with 0.08% sodium azide
STORAGE CONDITIONS:	Aliquot and store Calreticulin antibody at -20 °C. As with all antibodies avoid freeze/thaw cycles.
CLONALITY:	Polyclonal
CONJUGATE:	Unconjugated

Additional Info

ALTERNATE NAMES:	CALR, Calregulin, CC1qR, CRP55, CRT, CRTC, ERp60, Grp60, RO, SSA, Calreticulin, HACBP
ACCESSION NO.:	P27797
PROTEIN GI NO.:	117501
OFFICIAL SYMBOL:	CALR
GENE ID:	811

Background

FOR RESEARCH USE ONLY