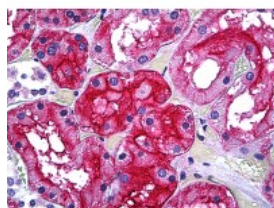




GGT Antibody [1F9]

CATALOG NUMBER: 51-712



Immunohistochemistry of human kidney
tubules stained using GGT Monoclonal
Antibody.

Specifications

SPECIES REACTIVITY:	Human, Mouse
TESTED APPLICATIONS:	ELISA, IHC, IP, WB
APPLICATIONS:	GGT antibody can be used in Western Blot starting at 0.5 - 1 ug/mL, and immunohistochemistry starting at 10 ug/mL.
USER NOTE:	Optimal dilutions for each application to be determined by the researcher.
IMMUNOGEN:	Recombinant protein
HOST SPECIES:	Mouse

Properties

PURIFICATION:	Protein A Column
PHYSICAL STATE:	Liquid
BUFFER:	PBS, pH 7.2
STORAGE CONDITIONS:	GGT antibody can be stored short term 4 °C. For long term storage aliquot and store at -20 °C. As with all antibodies avoid freeze/thaw cycles.
CLONALITY:	Monoclonal
ISOTYPE:	IgG2a,k
CONJUGATE:	Unconjugated

Additional Info

ALTERNATE NAMES:	GGT1, CD224 antigen, CD224, Ec 2.3.2.2, Glutamyl transpeptidase, GTG, Gamma-glutamyltransferase, Glutathione hydrolase 1, GLUTATHIONURIA, Gamma-glutamyl transpeptidase, Gamma-glutamyltransferase 1, Gamma-glutamyltranspeptidase 1, GGT, Leukotriene-C4 hydrolase, D22S672, D22S732, Gamma-glutamyltransferase 2, GGT 1
ACCESSION NO.:	P19440
PROTEIN GI NO.:	93140064
OFFICIAL SYMBOL:	GGT1

Background

FOR RESEARCH USE ONLY

December 13, 2016