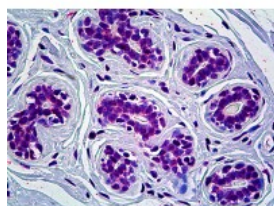




CRY1 Antibody [4H4-1C4]

CATALOG NUMBER: 51-689



Immunohistochemistry of human breast tissue stained using CRY1 Monoclonal Antibody.

Specifications

APPLICATIONS:	CRY1 antibody can be used in Western Blot, and immunohistochemistry starting at 10 ug/mL.
USER NOTE:	Optimal dilutions for each application to be determined by the researcher.
IMMUNOGEN:	Recombinant protein
HOST SPECIES:	Mouse

Properties

PURIFICATION:	Protein A Column
PHYSICAL STATE:	Liquid
BUFFER:	PBS, pH 7.2
STORAGE CONDITIONS:	CRY1 antibody can be stored short term 4 °C. For long term storage aliquot and store at -20 °C. As with all antibodies avoid freeze/thaw cycles.
CLONALITY:	Monoclonal
ISOTYPE:	IgG1,k
CONJUGATE:	Unconjugated

Additional Info

ALTERNATE NAMES:	CRY1, Cryptochrome 1, Cryptochrome-1, Photolyase homolog 1, PHLL1
ACCESSION NO.:	Q16526
PROTEIN GI NO.:	74735764
OFFICIAL SYMBOL:	CRY1
GENE ID:	1407

Background

FOR RESEARCH USE ONLY