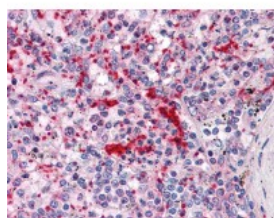




## Talin Antibody [2E10]

CATALOG NUMBER: 51-522



Immunohistochemistry of human spleen tissue stained using Talin Monoclonal Antibody.

### Specifications

<b>SPECIES REACTIVITY:</b>	Human, Mouse, Rat
<b>TESTED APPLICATIONS:</b>	ELISA, IHC, WB
<b>APPLICATIONS:</b>	Talin antibody can be used in Western Blot, immunohistochemistry starting at 1:100, and immunofluorescence.
<b>USER NOTE:</b>	Optimal dilutions for each application to be determined by the researcher.
<b>IMMUNOGEN:</b>	TLN1 (NP_006280, 1052 a.a. ~ 1150 a.a) partial recombinant protein with GST tag. MW of the GST tag alone is 26 KDa.
<b>HOST SPECIES:</b>	Mouse

### Properties

<b>PURIFICATION:</b>	Protein A Column
<b>PHYSICAL STATE:</b>	Liquid
<b>BUFFER:</b>	PBS, pH 7.2
<b>STORAGE CONDITIONS:</b>	Store Talin antibody at -20 °C. Aliquot to avoid freeze/thaw cycles.
<b>CLONALITY:</b>	Monoclonal
<b>ISOTYPE:</b>	IgG3,k
<b>CONJUGATE:</b>	Unconjugated

### Additional Info

<b>ALTERNATE NAMES:</b>	TLN1, KIAA1027, TLN, Talin-1, ILWEQ, Talin, Talin 1
<b>ACCESSION NO.:</b>	Q9Y490
<b>PROTEIN GI NO.:</b>	81175200
<b>OFFICIAL SYMBOL:</b>	TLN1
<b>GENE ID:</b>	7094

### Background

