

Interleukin-15 (IL-15), murine recombinant

CATALOG #: 4171-10 10 µg
4171-1000 1 mg

SOURCE: *E. coli*

PURITY: >98% by SDS-PAGE and HPLC analysis
Endotoxin level is <0.1 ng per µg of IL-15.

MOL. WEIGHT: 13.3 kDa

FORMULATION: Lyophilized from 10 mM Tris, pH 8.0

RECONSTITUTION:

Centrifuge the vial prior to opening. Reconstitute in water to a concentration of 0.1-1.0 µg/µl.

The solution can then be diluted into other aqueous buffers and stored at -4°C for 1 week or -20°C for future use.

STORAGE CONDITIONS:

The lyophilized murine IL-15 is best-stored desiccated below 0°C. Reconstituted IL-15 should be stored at working aliquots at -20°C. For long-term storage it is recommended to add a carrier protein (0.1% HAS or BSA). Avoid freeze/thaw cycles.

DESCRIPTION:

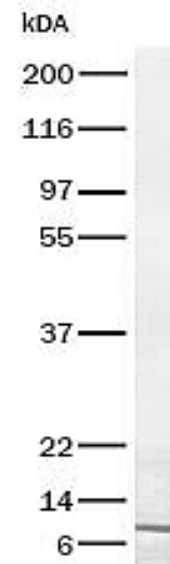
IL-15 is a potent lymphoid cell growth factor that exerts its biological activities primarily on T cells. Recombinant murine IL-15 is a 13.3 kDa protein containing 115 amino acid residues.

BIOLOGICAL ACTIVITY:

The ED₅₀ as determined by the dose-dependent stimulation of the proliferation of murine CTLL-2 cells is ≤5 ng/ml, corresponding to a specific activity of ≥2 x 10⁵ units/mg.

AMINO ACID SEQUENCE:

MNWDVRYDL EKIESLIQSI HIDTTLTYDS DFHPSCVKTA MNCFLLELQV ILHEYSNMTL
NETVRNVLYL ANSTLSSNKN VAESGCKECE ELEKTFTEF LQSFIRIVQM FINTS



SDS-PAGE (4-20%) of Murine IL-15: 1 µg of murine IL-15 loaded under reducing conditions and stained with Coomassie Blue. Murine IL-15 has a predicted MW of 13.3 kDa.

RELATED PRODUCTS:

- IL-15, human recombinant (**Cat # 4170-10, -50, -1000**)
- IL-15, rat recombinant (**Cat # 4172-10, -1000**)
- IL-15, Human CellExp™, human recombinant (**Cat # 7273-10**)
- IL-15 (human) ELISA Kit (**Cat # K4739-100**)
- IL-15 Antibody (**Cat # 5170-100**)
- IL-15 Antibody (**Cat # 5171-100**)
- IL-15 Antibody (**Cat # 5172-100**)

FOR RESEARCH USE ONLY! Not to be used on humans.