

NB100-567**TAF15 Antibody****Unit Size**

0.1 ml

Concentration

1.0 mg/ml

Storage

Store at 4°C. Do not freeze.

Applications

WB, IHC, IHC-P, IP

Species

Human

Host

Rabbit

Clonality

Polyclonal

Purity

Immunogen affinity purified

Preservative

0.09% Sodium Azide

Updated 3/9/2013 2.0

Immunogen

A synthetic peptide which maps to a region between residues 200 and 250 of human TAFII68 using the numbering given in Swiss-Prot entry Q92804 (GenelD 8148).

Recommended Dilutions

Immunohistochemistry

Immunohistochemistry-Paraffin 1:250

Immunoprecipitation 1 -4 ug/mg lysate

Western Blot 1:5000 - 1:20000

Buffer

Tris-citrate/phosphate buffer, pH 7 to 8

Uses

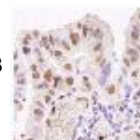
Optimal working dilutions should be determined experimentally by the investigator. Prepare working dilution immediately before use. Suggested starting dilutions are as follows.

Western Blot: 1:5,000 - 1:20,000 Immunoprecipitation: 1 to 4 ug/mg lysate

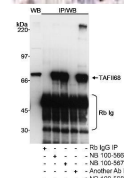
Histo/Cytochemistry: not tested *In some cases, the antibody may be diluted further than indicated.

Images

Immunohistochemistry-Paraffin: TAF15 Antibody [NB100-567] - FFPE section of human stomach adenocarcinoma. Affinity purified rabbit anti-TAFII68 used at a dilution of 1:250.



Immunoprecipitation: TAF15 Antibody [NB100-567] - Detection of human TAFII68 on HeLa whole cell lysate using NB100-567. TAFII68 was IPed with rabbit anti-TAFII68 antibodies NB100-566, NB100-567, NB100-568, and another using each at 0.3 ug/mg... See more at www.novusbio.com/NB100-567



Limitations: This product is for research use only and is not approved for use in humans or in clinical diagnosis. Products are guaranteed for six months from the date of receipt except for peptides and proteins which are guaranteed for 3 months. **For more information on our guarantee, please visit www.novusbio.com/guarantee.**

Novus USA

8100 Southpark Way, A-8
 Littleton, CO 80120
 p) 888-506-6887
 p) 303-730-1950
 f) 303-730-1966
novus@novusbio.com

Novus Canada

461 North Service Road West,
 Unit B37
 Oakville, ON L6M 2V5
 p) 855-668-8722
 f) 905-827-6402
canada@novusbio.com

Novus Europe

12 Cambridge Science Park
 Cambridge, UK CB4 0FQ
 UK: p) +44-1223-426-001, f) +44-871-971-1635
 DE: p) +49-6922-22340-60, f) +49-0800-58926-79
 IT: p) +39-02-4032-6786, f) +39-02-4032-6340
 FR: p) +33-1-76-77-45-30, f) +33-1-76-77-45-31
europe@novusbio.com

