

NB100-2522**SIRT6 Antibody****Unit Size**

0.1 ml

Concentration

1.12 mg/ml

Storage

Store at 4°C. Do not freeze.

Applications

WB, IHC, IHC-P

Species

Mouse, Rat

Molecular Weight

37kDa

Host

Rabbit

Clonality

Polyclonal

Purity

Immunogen affinity purified

Preservative

0.1% Sodium Azide

Immunogen

A synthetic peptide made to a C-terminal region of the mouse SIRT6 protein (within residues 250-334). [Swiss-Prot P59941]

Recommended Dilutions

Immunohistochemistry 1:300, Immunohistochemistry-Paraffin 1:300, Western Blot 1:1000-1:3000

Buffer

Tris-citrate/phosphate, pH 7-8

Uses

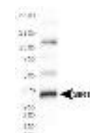
This SIRT6 antibody is useful for Western blot and Immunohistochemistry paraffin embedded sections. In Western blot a band is seen at ~37 kDa representing SIRT6, and a non-specific higher MW band can be seen at ~61 kDa. This antibody does not appear to detect the human protein in Western blot. In IHC-P, staining was observed in the nucleus of mouse testis. Prior to immunostaining paraffin tissues... See more at www.novusbio.com/NB100-2522

References (more available at www.novusbio.com/NB100-2522)

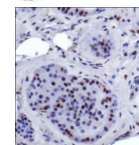
Min L, Ji Y, Bakiri L et al Liver cancer initiation is controlled by AP-1 through SIRT6-dependent inhibition of survivin Nat Cell Biol 2012 Oct 7 [PMID: 23041974] (IHC, WB, Mouse)

Images

Western Blot: SIRT6 Antibody [NB100-2522] - WB analysis of SIRT6 in NIH/3T3 cell lysate.



Immunohistochemistry: SIRT6 Antibody [NB100-2522] - SIRT6 antibody was tested in mouse testis using DAB with hematoxylin counterstain.



Updated 3/9/2013 2.0

Limitations: This product is for research use only and is not approved for use in humans or in clinical diagnosis. Products are guaranteed for six months from the date of receipt except for peptides and proteins which are guaranteed for 3 months. **For more information on our guarantee, please visit www.novusbio.com/guarantee.**

Novus USA

8100 Southpark Way, A-8
 Littleton, CO 80120
 p) 888-506-6887
 p) 303-730-1950
 f) 303-730-1966
novus@novusbio.com

Novus Canada

461 North Service Road West,
 Unit B37
 Oakville, ON L6M 2V5
 p) 855-668-8722
 f) 905-827-6402
canada@novusbio.com

Novus Europe

12 Cambridge Science Park
 Cambridge, UK CB4 0FQ
 UK: p) +44-1223-426-001, f) +44-871-971-1635
 DE: p) +49-6922-22340-60, f) +49-0800-58926-79
 IT: p) +39-02-4032-6786, f) +39-02-4032-6340
 FR: p) +33-1-76-77-45-30, f) +33-1-76-77-45-31
europe@novusbio.com

