

NB100-57524**SMARCA1 Antibody****Unit Size**

0.1 mg

Concentration

1.0 mg/ml

Storage

Store at 4C. Do not freeze.

Applications

WB, IHC, IHC-P, IP

Species

Human

Host

Rabbit

Clonality

Polyclonal

Purity

Immunogen affinity purified

Preservative

0.09% Sodium Azide

Immunogen

The immunogen recognized by this antibody maps to a region between residue 1004 and 1054 of human SMARCA1/SNF2L using the numbering given in entry NP_003060.2 (GeneID 6594).

Recommended Dilutions

Immunohistochemistry, Immunohistochemistry-Paraffin, Immunoprecipitation 2 to 5 mcg/mg, Western Blot

Buffer

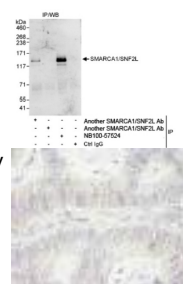
Tris-citrate/phosphate buffer, pH 7 to 8

Uses

This antibody is useful in Immunohistochemistry-Paraffin, Immunoprecipitation and Western Blot. Not recommended for blotting crude sources of SMARCA1/SNF2L. NB100-57524 can be used at 1:2,000 to 1:10,000 for blotting enriched sources (e.g. immunoprecipitated and exogenously expressed) of SMARCA1/SNF2L.

Images

Western Blot: SMARCA1 Antibody [NB100-57524] - Whole cell lysate (1 mg for IP, 20% of IP loaded) from HeLa cells. NB100-57524 used for IP at 3 mcg/mg lysate.



Immunohistochemistry-Paraffin: SMARCA1 Antibody [NB100-57524] - FFPE section of human colon carcinoma. Affinity purified rabbit anti-SMARCA1/SNF2L used at a dilution of 1:500.

Notes

Western Blot Image Notes: Detection of Human SMARCA1/SNF2L by Western Blot of Immunoprecipitates. Samples: Whole cell lysate (1 mg for IP, 20% of IP loaded) from HeLa cells. Antibodies: Affinity purified rabbit anti-SMARCA1/SNF2L antibody NB100-57524 used for IP at 3 mcg/mg lysate. SMARCA1/SNF2L was also immunoprecipitated by another rabbit anti-SMARCA1/SNF2L antibody, which recognizes an upstream... See more at www.novusbio.com/NB100-57524

Updated 3/9/2013 2.0

Limitations: This product is for research use only and is not approved for use in humans or in clinical diagnosis. Products are guaranteed for six months from the date of receipt except for peptides and proteins which are guaranteed for 3 months. **For more information on our guarantee, please visit www.novusbio.com/guarantee.**

Novus USA

8100 Southpark Way, A-8
 Littleton, CO 80120
 p) 888-506-6887
 p) 303-730-1950
 f) 303-730-1966
novus@novusbio.com

Novus Canada

461 North Service Road West,
 Unit B37
 Oakville, ON L6M 2V5
 p) 855-668-8722
 f) 905-827-6402
canada@novusbio.com

Novus Europe

12 Cambridge Science Park
 Cambridge, UK CB4 0FQ
 UK: p) +44-1223-426-001, f) +44-871-971-1635
 DE: p) +49-6922-22340-60, f) +49-0800-58926-79
 IT: p) +39-02-4032-6786, f) +39-02-4032-6340
 FR: p) +33-1-76-77-45-30, f) +33-1-76-77-45-31
europe@novusbio.com

