

NB110-40877**ADFP Antibody****Unit Size**

0.1 ml

Concentration

1.04 mg/ml

Storage

Aliquot and store at -20C or -80C. Avoid freeze-thaw cycles.

Applications

WB, ICC/IF, IHC-P

Species

Human, Mouse

Molecular Weight

51kDa

Host

Rabbit

Clonality

Polyclonal

Purity

Immunogen affinity purified

Preservative

0.05% Sodium Azide

Immunogen

A synthetic peptide made to a C-terminal region of mouse ADFP (within residues 350-425) [Swiss-Prot# P43883]

Recommended Dilutions

Immunocytochemistry/Immunofluorescence 1:50 - 1:200

Immunohistochemistry-Paraffin 1:200

Western Blot 2 ug/ml

Buffer

PBS, 30% glycerol

Uses

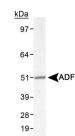
This ADFP antibody can be used for Western blot and Immunofluorescence/Immunocytochemistry. In Western blot a band is observed at ~51 kDa. In ICC/IF, membrane staining was observed in HeLa cells. In IHC-P, staining was observed on the membrane of mouse liver cells. Prior to immunostaining paraffin tissues, antigen retrieval with sodium citrate buffer (pH 6.0) is recommended.

References (more available at www.novusbio.com/NB110-40877)

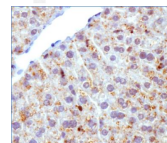
Lige B, Sampels V, Coppens I. Characterization of a second sterol-esterifying enzyme in Toxoplasma highlights the importance of cholesterol storage pathways for the parasite. Mol Microbiol 2013 Feb 3 [PMID: 23374239] (ICC/IF, Mouse)

Images (more available at www.novusbio.com/NB110-40877)

Western Blot: ADFP Antibody [NB110-40877] - Detection of murine ADFP in mouse liver lysate.



Immunocytochemistry/Immunofluorescence: ADFP Antibody [NB110-40877] - ADFP antibody was tested in mouse liver using DAB with hematoxylin counterstain.



Updated 3/9/2013 2.0

Limitations: This product is for research use only and is not approved for use in humans or in clinical diagnosis. Products are guaranteed for six months from the date of receipt except for peptides and proteins which are guaranteed for 3 months. **For more information on our guarantee, please visit www.novusbio.com/guarantee.**

Novus USA

8100 Southpark Way, A-8
 Littleton, CO 80120
 p) 888-506-6887
 p) 303-730-1950
 f) 303-730-1966
novus@novusbio.com

Novus Canada

461 North Service Road West,
 Unit B37
 Oakville, ON L6M 2V5
 p) 855-668-8722
 f) 905-827-6402
canada@novusbio.com

Novus Europe

12 Cambridge Science Park
 Cambridge, UK CB4 0FQ
 UK: p) +44-1223-426-001, f) +44-871-971-1635
 DE: p) +49-6922-22340-60, f) +49-0800-58926-79
 IT: p) +39-02-4032-6786, f) +39-02-4032-6340
 FR: p) +33-1-76-77-45-30, f) +33-1-76-77-45-31
europe@novusbio.com

