

NB110-94158**MAT2A Antibody****Unit Size**

0.1 ml

Concentration

1.35 mg/ml

Storage

Store at 4C short term. Aliquot and store at -20C long term. Avoid freeze-thaw cycles.

Applications

WB, ICC/IF

Species

Human, Mouse, Rat, Bovine, Chicken, Primate, Porcine

Molecular Weight

43kDa

Host

Rabbit

Clonality

Polyclonal

Purity

Immunogen affinity purified

Preservative

0.1% Sodium Azide

Immunogen

Synthetic peptide made to an N-terminal portion of human MAT2A (within residues 1-100). [Swiss-Prot# P31153]

Recommended Dilutions

Immunocytochemistry/Immunofluorescence 1:2000, Western Blot 1.0 ug/ml

Buffer

PBS, 30% glycerol

Uses

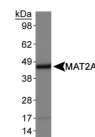
This MAT2A antibody is useful for Western blot, where a band is seen at ~43 kDa, and Immunocytochemistry/Immunofluorescence where cytoplasmic staining is observed in HepG2 cells.

References

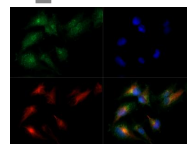
Ramani K, Tomasi ML. Transcriptional regulation of methionine adenosyltransferase 2A by peroxisome proliferator-activated receptors in rat hepatic stellate cells. Hepatology. 2012 Jan 23. [PMID: 22271545] (WB, Mouse)

Images

Western Blot: MAT2A Antibody [NB110-94158] - Detection of MAT2A in HepG2 whole cell lysates.



Immunocytochemistry/Immunofluorescence: MAT2A Antibody [NB110-94158] - MAT2A antibody was tested in HepG2 cells with Dylight 488 (green). Nuclei and alpha-tubulin were counterstained with DAPI (blue) and Dylight 550 (red).



Updated 3/9/2013 2.0

Limitations: This product is for research use only and is not approved for use in humans or in clinical diagnosis. Products are guaranteed for six months from the date of receipt except for peptides and proteins which are guaranteed for 3 months. **For more information on our guarantee, please visit www.novusbio.com/guarantee.**

Novus USA

8100 Southpark Way, A-8
 Littleton, CO 80120
 p) 888-506-6887
 p) 303-730-1950
 f) 303-730-1966
novus@novusbio.com

Novus Canada

461 North Service Road West,
 Unit B37
 Oakville, ON L6M 2V5
 p) 855-668-8722
 f) 905-827-6402
canada@novusbio.com

Novus Europe

12 Cambridge Science Park
 Cambridge, UK CB4 0FQ
 UK: p) +44-1223-426-001, f) +44-871-971-1635
 DE: p) +49-6922-22340-60, f) +49-0800-58926-79
 IT: p) +39-02-4032-6786, f) +39-02-4032-6340
 FR: p) +33-1-76-77-45-30, f) +33-1-76-77-45-31
europe@novusbio.com

