

NB120-11424**EDG1 Antibody****Unit Size**

0.1 mg

Concentration

Concentrations vary lot to lot. See vial label for concentration.

Storage

Store at -20°C. Avoid freeze-thaw cycles.

Applications

WB, ICC/IF, IHC, IHC-P, IP

Species

Human, Mouse

Host

Rabbit

Clonality

Polyclonal

Purity

Affinity purified

Preservative

0.05% Sodium Azide

Specificity/Sensitivity

NB120-11424 detects S1P1 protein (EDG1) in transfected human cell samples. This shows no cross-reactivity to S1P3.

Immunogen

Synthetic peptide: SHPQKDDGDNPETI, corresponding to amino acids 359-372 of Mouse EDG1.

Recommended Dilutions

Immunoprecipitation, Western Blot 1 ug/ml, Immunohistochemistry Assay dependent, Immunohistochemistry-Paraffin, Immunocytochemistry/Immunofluorescence 5 ug/ml

Buffer

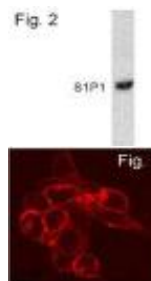
PBS containing 1mg/ml BSA

Uses

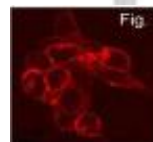
This antibody is useful in Western Blot, Immunoprecipitation and Immunofluorescence. Immunofluorescence data demonstrates that S1P1 is localized to the plasma membrane after staining with NB120-11424. WB: Detects a band of approximately 44kD.

Images

Western Blot: EDG1 Antibody [NB120-11424] - Figure 2 shows a Western blot of S1P1 in transfected HEK293 cell lysate using NB120-11424.



Immunofluorescence: EDG1 Antibody [NB120-11424] - Figure 1 shows immunofluorescence of S1P1 in transfected CCL39 cells using NB120-11424.



Updated 3/9/2013 2.0

Limitations: This product is for research use only and is not approved for use in humans or in clinical diagnosis. Products are guaranteed for six months from the date of receipt except for peptides and proteins which are guaranteed for 3 months. **For more information on our guarantee, please visit www.novusbio.com/guarantee.**

Novus USA

8100 Southpark Way, A-8
 Littleton, CO 80120
 p) 888-506-6887
 p) 303-730-1950
 f) 303-730-1966
novus@novusbio.com

Novus Canada

461 North Service Road West,
 Unit B37
 Oakville, ON L6M 2V5
 p) 855-668-8722
 f) 905-827-6402
canada@novusbio.com

Novus Europe

12 Cambridge Science Park
 Cambridge, UK CB4 0FQ
 UK: p) +44-1223-426-001, f) +44-871-971-1635
 DE: p) +49-6922-22340-60, f) +49-0800-58926-79
 IT: p) +39-02-4032-6786, f) +39-02-4032-6340
 FR: p) +33-1-76-77-45-30, f) +33-1-76-77-45-31
europe@novusbio.com

