

NB400-104H**SR-BI Antibody [HRP]****Unit Size**

0.1 ml

Concentration

1.0 mg/ml

Storage

Store at 4°C in the dark.

Applications

WB, IP

Species

Human, Mouse, Rat

Host

Rabbit

Clonality

Polyclonal

Conjugate

HRP

Purity

Affinity purified

Preservative

No Preservative

Specificity/Sensitivity

400-104 is specific for the SR-BI.

Immunogen

A C-terminal peptide containing residues from mouse Scavenger Receptor-BI (within residues 450-509).

Recommended Dilutions

Immunoprecipitation, Western Blot 1:1000 -1:5000

Buffer

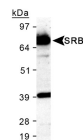
PBS

Uses

In western blot experiments with NB 400-104 a band of ~ 82 kDa is seen in tissues that express SR-BI such as liver, ovary and adrenals and to a lesser extent testes, heart and mammary gland. A band is often also seen at ~57 kDa representing the unglycosylated form of SR-BI. Also works for immunohistochemistry and immunoprecipitation.

Images

Western Blot: SR-BI Antibody [HRP] [NB400-104H] - Detection of SR-BI in 25 ug of mouse liver lysate, using NB400-104 (lotJ) at a 1:1,000 dilution, shows distinct band at 82 kDa.

**Notes**

Licensed to Novus Biologicals LLC under U.S. Patent No 6,350,859.

Updated 3/9/2013 2.0

Limitations: This product is for research use only and is not approved for use in humans or in clinical diagnosis. Products are guaranteed for six months from the date of receipt except for peptides and proteins which are guaranteed for 3 months. **For more information on our guarantee, please visit www.novusbio.com/guarantee.**

Novus USA

8100 Southpark Way, A-8
 Littleton, CO 80120
 p) 888-506-6887
 p) 303-730-1950
 f) 303-730-1966
novus@novusbio.com

Novus Canada

461 North Service Road West,
 Unit B37
 Oakville, ON L6M 2V5
 p) 855-668-8722
 f) 905-827-6402
canada@novusbio.com

Novus Europe

12 Cambridge Science Park
 Cambridge, UK CB4 0FQ
 UK: p) +44-1223-426-001, f) +44-871-971-1635
 DE: p) +49-6922-22340-60, f) +49-0800-58926-79
 IT: p) +39-02-4032-6786, f) +39-02-4032-6340
 FR: p) +33-1-76-77-45-30, f) +33-1-76-77-45-31
europe@novusbio.com

