

NB300-180**Synapsin I [p Ser9] Antibody****Unit Size**

0.1 ml

Concentration

0.1 mg/ml

Storage

Store at -20C. Avoid freeze-thaw cycles.

Applications

WB, IHC, IHC-Fr, IHC-P

Species

Rat

Host

Rabbit

Clonality

Polyclonal

Purity

Affinity purified

Preservative

No Preservative

Marker

Synaptic Marker

Specificity/Sensitivity

Specific for ~78k synapsin I doublet protein phosphorylated at Ser9. The antibody also weakly labels the ~55k synapsin II protein which has a similar phosphorylation site to that of Ser9 on synapsin I. Immunolabeling is blocked by preadsorption of the antibody with the phosphopeptide used as antigen but not by the corresponding dephosphopeptide. Immunolabeling is also completely eliminated by treatment with gamma phosphatase.

Immunogen

Synthetic phospho-peptide corresponding to amino acid residues surrounding Ser9 conjugated to KLH

Recommended Dilutions

Immunohistochemistry 1:500

Immunohistochemistry-Frozen 1:500

Immunohistochemistry-Paraffin 1:500

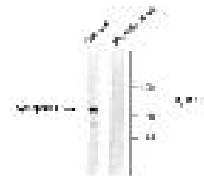
Western Blot 1:1000

Buffer

10mM HEPES [pH 7.5], 150mM NaCl, 0.1 mg/ml BSA and 50% glycerol

Images

Western Blot: Synapsin I [phospho Ser9] Antibody [NB300-180] - Rat cortex lysate showing specific immunolabeling of the ~78k synapsin I phosphorylated at Ser9 (Control). The phosphospecificity of this labeling is shown in the second lane (la... See more at www.novusbio.com/NB300-180



Immunohistochemistry: Synapsin I [p Ser9] Antibody [NB300-180] - Cultured mouse caudate neurons showing synapsin I when phosphorylated at Ser9



Updated 3/9/2013 2.0

Limitations: This product is for research use only and is not approved for use in humans or in clinical diagnosis. Products are guaranteed for six months from the date of receipt except for peptides and proteins which are guaranteed for 3 months. **For more information on our guarantee, please visit www.novusbio.com/guarantee.**

Novus USA

8100 Southpark Way, A-8
 Littleton, CO 80120
 p) 888-506-6887
 p) 303-730-1950
 f) 303-730-1966
novus@novusbio.com

Novus Canada

461 North Service Road West,
 Unit B37
 Oakville, ON L6M 2V5
 p) 855-668-8722
 f) 905-827-6402
canada@novusbio.com

Novus Europe

12 Cambridge Science Park
 Cambridge, UK CB4 0FQ
 UK: p) +44-1223-426-001, f) +44-871-971-1635
 DE: p) +49-6922-22340-60, f) +49-0800-58926-79
 IT: p) +39-02-4032-6786, f) +39-02-4032-6340
 FR: p) +33-1-76-77-45-30, f) +33-1-76-77-45-31
europe@novusbio.com

