

NB500-317**beta 2 Microglobulin Antibody (B2M-01)****Unit Size**

0.1 mg

Concentration

1 mg/ml

Storage

Store at 4C short term. Aliquot and store at -20C long term. Avoid freeze-thaw cycles.

Applications

WB, ELISA, FLOW, IHC, IHC-P, IP, RIA

Species

Human, Bovine (Negative), Canine (Negative), Chicken (Negative), Mouse (Negative), Rabbit (Negative)

Host

Mouse

Clonality

Monoclonal

Isotype

IgG2a

Purity

Protein A purified

Preservative

15mM Sodium Azide

Specificity/Sensitivity

The antibody B2M-01 reacts with beta2-microglobulin (beta2M) associated with cell-surface MHC Class I molecules and other membrane antigens as well as with soluble beta2-microglobulin. Beta2M is a 12 kDa Ig like glycoprotein expressed on lymphocytes, thymocytes, monocytes, granulocytes, platelets, endothelial cells and epithelial cells. It is absent on erythrocytes. This reacts with beta-2-microglobulin, associated with cell-surface MHC Class I molecules and other membrane antigens as well as with soluble forms of beta-2-microglobulin.

Immunogen

Purified human beta2-microglobulin (NM_004048.2).

Recommended Dilutions

Flow Cytometry, Immunoprecipitation 1:50, Western Blot 1:1000, Immunohistochemistry-Paraffin 1:200, ELISA 1:2000, Radioimmunoassay, Immunohistochemistry

Buffer

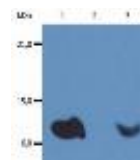
PBS [pH 7.4]

Uses

This product is useful for Flow Cytometry, Western Blotting, Immunohistochemistry (paraffin sections), ELISA, radioimmunoassay and RIA. Optimal dilutions/concentrations should be determined by the end user. Purity is > 95% (by SDS-PAGE)

Images

Western Blot: Beta-2-microglobulin Antibody (B2M-01) [NB500-317] - Western Blotting analysis (non-reducing conditions) of whole cell lysate of various cell lines using anti-human beta 2-microglobulin (B2M-01). Lane 1: RAJI human Burkitt lymph... See more at www.novusbio.com/NB500-317



Updated 3/9/2013 2.0

Limitations: This product is for research use only and is not approved for use in humans or in clinical diagnosis. Products are guaranteed for six months from the date of receipt except for peptides and proteins which are guaranteed for 3 months. **For more information on our guarantee, please visit www.novusbio.com/guarantee.**

Novus USA

8100 Southpark Way, A-8
 Littleton, CO 80120
 p) 888-506-6887
 p) 303-730-1950
 f) 303-730-1966
novus@novusbio.com

Novus Canada

461 North Service Road West,
 Unit B37
 Oakville, ON L6M 2V5
 p) 855-668-8722
 f) 905-827-6402
canada@novusbio.com

Novus Europe

12 Cambridge Science Park
 Cambridge, UK CB4 0FQ
 UK: p) +44-1223-426-001, f) +44-871-971-1635
 DE: p) +49-6922-22340-60, f) +49-0800-58926-79
 IT: p) +39-02-4032-6786, f) +39-02-4032-6340
 FR: p) +33-1-76-77-45-30, f) +33-1-76-77-45-31
europe@novusbio.com

