

NB500-249B**Beclin 1 Antibody [Biotin]****Unit Size**

0.1 ml

Concentration

1.0 mg/ml

Storage

Store at 4°C in the dark.

Applications

WB, IHC, IHC-P, IP

Species

Human, Mouse

Host

Rabbit

Clonality

Polyclonal

Conjugate

Biotin

Purity

Immunogen affinity purified

Preservative

No Preservative

Specificity/Sensitivity

This is specific to human Beclin 1.

Immunogen

NB 500-249 was raised against an internal synthetic peptide to human Beclin 1, containing residues within 1-100. This sequence has 94% identity with the mouse sequence and 88% identity with the rat sequence.

Recommended Dilutions

Immunohistochemistry, Immunohistochemistry-Paraffin, Immunoprecipitation, Western Blot
 1:2000 - 1:5000

Buffer

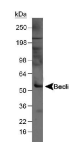
PBS

Uses

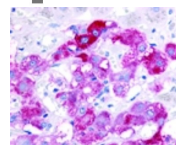
Western blot, Immunoprecipitation, Immunocytochemistry and most histochemical applications. Western blot a band is seen at ~52 kDa representing Beclin 1.

Images

Western Blot: Beclin 1 Antibody [Biotin] [NB500-249B] - Detection of Beclin in mouse liver tissue lysate (50 ug) using NB 500-249. ECL detection at 1 minute.



Immunohistochemistry: Beclin 1 Antibody [Biotin] [NB500-249B] - Pheochromocytes of the Adrenal Medulla 40x.



Updated 3/9/2013 2.0

Limitations: This product is for research use only and is not approved for use in humans or in clinical diagnosis. Products are guaranteed for six months from the date of receipt except for peptides and proteins which are guaranteed for 3 months. **For more information on our guarantee, please visit www.novusbio.com/guarantee.**

Novus USA

8100 Southpark Way, A-8
 Littleton, CO 80120
 p) 888-506-6887
 p) 303-730-1950
 f) 303-730-1966
novus@novusbio.com

Novus Canada

461 North Service Road West,
 Unit B37
 Oakville, ON L6M 2V5
 p) 855-668-8722
 f) 905-827-6402
canada@novusbio.com

Novus Europe

12 Cambridge Science Park
 Cambridge, UK CB4 0FQ
 UK: p) +44-1223-426-001, f) +44-871-971-1635
 DE: p) +49-6922-22340-60, f) +49-0800-58926-79
 IT: p) +39-02-4032-6786, f) +39-02-4032-6340
 FR: p) +33-1-76-77-45-30, f) +33-1-76-77-45-31
europe@novusbio.com

