

NB600-1043**Osteopontin Antibody****Unit Size**

0.2 ml

Concentration

This product is unpurified. The exact concentration of antibody is not quantifiable.

Storage

Store at 4°C short term. Aliquot and store at -20°C long term. Avoid freeze-thaw cycles.

Applications

WB, ELISA, IHC, IHC-P, IP

Species

Human, Mouse, Rat, Canine, Porcine

Host

Rabbit

Clonality

Polyclonal

Purity

Whole antisera

Preservative

0.1% Sodium Azide

Specificity/Sensitivity

This recognises the full length osteopontin protein (which runs at 66 kD on westerns), as well as the C-terminal fragments of both thrombin and MMP-cleaved OPN. This recognises the 32 kD MMP-cleaved C-fragment, but not the 40 kD N-terminal fragment.

Immunogen

Synthetic peptide, from the human osteopontin protein, conjugated to KLH using maleimide (CKSKKFRPDQYDP).

Recommended Dilutions

ELISA 1:5000 - 1:20000, Immunohistochemistry 1:100 - 1:300, Immunohistochemistry-Paraffin, Immunoprecipitation 1:100, Western Blot 1:500 - 1:2000

Buffer

0.02 M Potassium Phosphate with 0.15 M Sodium Chloride pH 7.2 (Concentration 75 mg/mL by Refractometry)

Uses

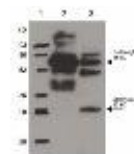
The antibody exclusively recognizes C-terminal fragments of both thrombin and MMP-cleaved OPN. A 1:1000 dilution will detect strongly approximately 250 ng of OPN protein on a blot. No pretreatment is required for IHC when formalin-fixed paraffin-embedded tissue is stained.

References (more available at www.novusbio.com/NB600-1043)

Kim S, Shin T. Immunohistochemical study of osteopontin in boar testis. J Vet Sci 2007 Jun [PMID: 17519561]

Images

Western Blot: Osteopontin Antibody [NB600-1043] - Figure 2. Immunoblotting. Rabbit anti-Osteopontin was used at a 1:1,000 dilution to detect Osteopontin by Western blot. In lane 2, reactivity is shown against 250 ng of human osteopontin... See more at www.novusbio.com/NB600-1043



Immunohistochemistry: Osteopontin Antibody [NB600-1043] - Figure 1. Immunohistochemistry. Rabbit anti-Osteopontin was used at a 1:100-1:300 dilution to detect osteopontin by immunohistochemistry. Osteopontin is a normal component of elas... See more at www.novusbio.com/NB600-1043



Updated 3/9/2013 2.0

Limitations: This product is for research use only and is not approved for use in humans or in clinical diagnosis. Products are guaranteed for six months from the date of receipt except for peptides and proteins which are guaranteed for 3 months. **For more information on our guarantee, please visit www.novusbio.com/guarantee.**

Novus USA

8100 Southpark Way, A-8
 Littleton, CO 80120
 p) 888-506-6887
 p) 303-730-1950
 f) 303-730-1966
novus@novusbio.com

Novus Canada

461 North Service Road West,
 Unit B37
 Oakville, ON L6M 2V5
 p) 855-668-8722
 f) 905-827-6402
canada@novusbio.com

Novus Europe

12 Cambridge Science Park
 Cambridge, UK CB4 0FQ
 UK: p) +44-1223-426-001, f) +44-871-971-1635
 DE: p) +49-6922-22340-60, f) +49-0800-58926-79
 IT: p) +39-02-4032-6786, f) +39-02-4032-6340
 FR: p) +33-1-76-77-45-30, f) +33-1-76-77-45-31
europe@novusbio.com

