

**NBL1-08411****calmodulin-lysine N-methyltransferase Overexpression Lysate****Unit Size**

0.1 mg

**Storage**

Store at -80C. Avoid freeze-thaw cycles.

**Applications**

WB

**Molecular Weight**

35.9kDa

**Purity**

Protein

**Specificity/Sensitivity**

Homo sapiens calmodulin-lysine N-methyltransferase, mRNA.

**Immunogen**

The lysate was created in HEK293T cells, using plasmid ID RC208105 and based on accession number NM\_024766. The protein contains a C-terminal DDK tag.

**Recommended Dilutions**

Western Blot

**Buffer**

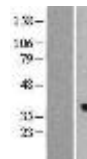
RIPA buffer

**Uses**

This product is intended for use as a positive control in Western Blot. You will receive the lysate (100ug), and an empty vector negative control (100 ug).

**Images**

Western Blot: calmodulin-lysine N-methyltransferase Overexpression Lysate (Adult Normal) [NBL1-08411] Left-Empty vector transfected control cell lysate (HEK293 cell lysate); Right -Over-expression Lysate for calmodulin-lysine N-methyltransfe... See more at [www.novusbio.com/NBL1-08411](http://www.novusbio.com/NBL1-08411)

**Notes**

This product is manufactured by and sold under license from OriGene Technologies and its use is limited solely for research purposes. Please note that "1 mg/ml" refers to the total protein concentration and that the specific protein concentration is not determined at this time.

Updated 3/9/2013 2.0

**Limitations:** This product is for research use only and is not approved for use in humans or in clinical diagnosis. Products are guaranteed for six months from the date of receipt except for peptides and proteins which are guaranteed for 3 months. **For more information on our guarantee, please visit [www.novusbio.com/guarantee](http://www.novusbio.com/guarantee).**

**Novus USA**

8100 Southpark Way, A-8  
 Littleton, CO 80120  
 p) 888-506-6887  
 p) 303-730-1950  
 f) 303-730-1966  
[novus@novusbio.com](mailto:novus@novusbio.com)

**Novus Canada**

461 North Service Road West,  
 Unit B37  
 Oakville, ON L6M 2V5  
 p) 855-668-8722  
 f) 905-827-6402  
[canada@novusbio.com](mailto:canada@novusbio.com)

**Novus Europe**

12 Cambridge Science Park  
 Cambridge, UK CB4 0FQ  
 UK: p) +44-1223-426-001, f) +44-871-971-1635  
 DE: p) +49-6922-22340-60, f) +49-0800-58926-79  
 IT: p) +39-02-4032-6786, f) +39-02-4032-6340  
 FR: p) +33-1-76-77-45-30, f) +33-1-76-77-45-31  
[europe@novusbio.com](mailto:europe@novusbio.com)

