

**NBL1-09840**

## Desmin Overexpression Lysate

### Unit Size

0.1 mg

### Storage

Store at -80C. Avoid freeze-thaw cycles.

### Applications

WB

### Molecular Weight

53.4kDa

### Purity

Protein

### Specificity/Sensitivity

Homo sapiens desmin (DES), mRNA.

### Immunogen

The lysate was created in HEK293T cells, using plasmid ID RC205685 and based on accession number NM\_001927. The protein contains a C-terminal DDK tag.

### Recommended Dilutions

Western Blot

### Buffer

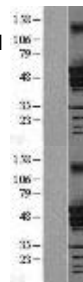
RIPA buffer

### Uses

This product is intended for use as a positive control in Western Blot. You will receive the lysate (100ug), and an empty vector negative control (100 ug).

### Images

Western Blot: Desmin Overexpression Lysate (Adult Normal) [NBL1-09840] Left-Empty vector transfected control cell lysate (HEK293 cell lysate); Right -Over-expression Lysate for Desmin.



Western Blot: Desmin Overexpression Lysate (Adult Normal) [NBL1-09840] - Western Blot experiments. Left-Control; Right -Over-expression Lysate for DES

### Notes

This product is manufactured by and sold under license from OriGene Technologies and its use is limited solely for research purposes. Please note that "1 mg/ml" refers to the total protein concentration and that the specific protein concentration is not determined at this time.

Updated 3/9/2013 2.0

**Limitations:** This product is for research use only and is not approved for use in humans or in clinical diagnosis. Products are guaranteed for six months from the date of receipt except for peptides and proteins which are guaranteed for 3 months. **For more information on our guarantee, please visit [www.novusbio.com/guarantee](http://www.novusbio.com/guarantee).**

#### Novus USA

8100 Southpark Way, A-8  
 Littleton, CO 80120  
 p) 888-506-6887  
 p) 303-730-1950  
 f) 303-730-1966  
[novus@novusbio.com](mailto:novus@novusbio.com)

#### Novus Canada

461 North Service Road West,  
 Unit B37  
 Oakville, ON L6M 2V5  
 p) 855-668-8722  
 f) 905-827-6402  
[canada@novusbio.com](mailto:canada@novusbio.com)

#### Novus Europe

12 Cambridge Science Park  
 Cambridge, UK CB4 0FQ  
 UK: p) +44-1223-426-001, f) +44-871-971-1635  
 DE: p) +49-6922-22340-60, f) +49-0800-58926-79  
 IT: p) +39-02-4032-6786, f) +39-02-4032-6340  
 FR: p) +33-1-76-77-45-30, f) +33-1-76-77-45-31  
[europe@novusbio.com](mailto:europe@novusbio.com)

