

NBP1-04338**PSMA Antibody (k1H7)****Unit Size**

0.1 ml

Concentration

1.0 mg/ml

Storage

Store at 4°C short term. Aliquot and store at -20°C long term. Avoid freeze-thaw cycles.

Applications

WB, ELISA

Species

Human

Host

Mouse

Clonality

Monoclonal

Isotype

IgG1 Kappa

Purity

Protein G purified

Preservative

0.1% Sodium Azide

Specificity/Sensitivity

Anti-human PSMA mAb, clone k1H7, is derived from hybridization of mouse FO myeloma cells with spleen cells from BALB/c mice immunized with a recombinant human PSMA protein.

Immunogen

Recombinant human PSMA (117-351aa) purified from E. coli (NP_001014986).

Recommended Dilutions

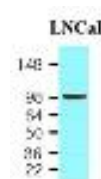
ELISA, Western Blot 1:1000-1:3000

Buffer

PBS (pH 7.4)

Images

Western Blot: PSMA Antibody (k1H7) [NBP1-04338] Cell lysates of LNCaP(30ug) were resolved by SDS-PAGE, transferred to NC membrane and probed with anti-human PSMA (1:1,000). Proteins were visualized using a goat anti-mouse secondary antibody ... See more at www.novusbio.com/NBP1-04338



Updated 3/9/2013 2.0

Limitations: This product is for research use only and is not approved for use in humans or in clinical diagnosis. Products are guaranteed for six months from the date of receipt except for peptides and proteins which are guaranteed for 3 months. **For more information on our guarantee, please visit www.novusbio.com/guarantee.**

Novus USA

8100 Southpark Way, A-8
 Littleton, CO 80120
 p) 888-506-6887
 p) 303-730-1950
 f) 303-730-1966
novus@novusbio.com

Novus Canada

461 North Service Road West,
 Unit B37
 Oakville, ON L6M 2V5
 p) 855-668-8722
 f) 905-827-6402
canada@novusbio.com

Novus Europe

12 Cambridge Science Park
 Cambridge, UK CB4 0FQ
 UK: p) +44-1223-426-001, f) +44-871-971-1635
 DE: p) +49-6922-22340-60, f) +49-0800-58926-79
 IT: p) +39-02-4032-6786, f) +39-02-4032-6340
 FR: p) +33-1-76-77-45-30, f) +33-1-76-77-45-31
europe@novusbio.com

