

NBP1-18908**SHC1 Antibody****Unit Size**

0.1 ml

Concentration

1.0 mg/ml

Storage

Store at 4C. Do not freeze.

Applications

WB, IP

Species

Human

Host

Rabbit

Clonality

Polyclonal

Purity

Immunogen affinity purified

Preservative

0.09% Sodium Azide

Immunogen

The immunogen recognized by this antibody maps to a region between residue 300 and 350 of human SHC (Src homology 2 domain containing) transforming protein 1 using the numbering given in entry NP_892113.4 (GeneID 6464).

Recommended Dilutions

Immunoprecipitation, Western Blot

Buffer

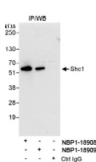
Tris-citrate/phosphate buffer, pH 7 to 8

Uses

This antibody is useful for immunoprecipitation. It is not recommended for western analysis.

Images

Western Blot: SHC1 Antibody [NBP1-18908] - Whole cell lysate (1 mg for IP, 20% of IP loaded) from HeLa cells. Antibodies: Affinity purified rabbit anti-Shc1 antibody used for IP at 3 mcg/mg lysate. Shc1 was also immunoprecipitated by rabbit ... See more at www.novusbio.com/NBP1-18908



Updated 3/9/2013 2.0

Limitations: This product is for research use only and is not approved for use in humans or in clinical diagnosis. Products are guaranteed for six months from the date of receipt except for peptides and proteins which are guaranteed for 3 months. **For more information on our guarantee, please visit www.novusbio.com/guarantee.**

Novus USA

8100 Southpark Way, A-8
 Littleton, CO 80120
 p) 888-506-6887
 p) 303-730-1950
 f) 303-730-1966
novus@novusbio.com

Novus Canada

461 North Service Road West,
 Unit B37
 Oakville, ON L6M 2V5
 p) 855-668-8722
 f) 905-827-6402
canada@novusbio.com

Novus Europe

12 Cambridge Science Park
 Cambridge, UK CB4 0FQ
 UK: p) +44-1223-426-001, f) +44-871-971-1635
 DE: p) +49-6922-22340-60, f) +49-0800-58926-79
 IT: p) +39-02-4032-6786, f) +39-02-4032-6340
 FR: p) +33-1-76-77-45-30, f) +33-1-76-77-45-31
europe@novusbio.com

