

**NBP1-45853****SGLT2 Antibody****Unit Size**

0.1 mg

**Concentration**

0.5 mg/ml

**Storage**

Store at -20C. Avoid freeze-thaw cycles.

**Applications**

WB

**Species**

Human, Mouse, Rat

**Host**

Rabbit

**Clonality**

Polyclonal

**Purity**

Affinity purified

**Preservative**

0.01% Thimerosal

**Immunogen**

Synthetic peptide near the N-terminus of mouse SGLT-2.

**Recommended Dilutions**

Western Blot

**Buffer**

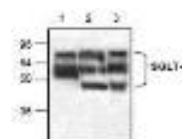
phosphate-buffered saline (PBS) containing 30% glycerol, 0.5% BSA

**Uses**

Western blotting (0.5-4ug/ml). However, the optimal concentrations should be determined individually. Other applications have not been determined. The antibody detects 74 kDa SGLT-2 from human, mouse, and rat origins. Reactivity to other species has not been determined. A ~55 kDa and a ~45 kDa bands can also be detected, representing the SGLT-2 cleavage fragments.

**Images**

Western Blot: SGLT2 Antibody [NBP1-45853] - Western blot analysis of SGLT-2 in lysate from Jurkat cells (Lane 1), mouse small intestine (Lane 2) and rat kidney (Lane 3).



Updated 3/9/2013 2.0

**Limitations:** This product is for research use only and is not approved for use in humans or in clinical diagnosis. Products are guaranteed for six months from the date of receipt except for peptides and proteins which are guaranteed for 3 months. **For more information on our guarantee, please visit [www.novusbio.com/guarantee](http://www.novusbio.com/guarantee).**

**Novus USA**

8100 Southpark Way, A-8  
 Littleton, CO 80120  
 p) 888-506-6887  
 p) 303-730-1950  
 f) 303-730-1966  
[novus@novusbio.com](mailto:novus@novusbio.com)

**Novus Canada**

461 North Service Road West,  
 Unit B37  
 Oakville, ON L6M 2V5  
 p) 855-668-8722  
 f) 905-827-6402  
[canada@novusbio.com](mailto:canada@novusbio.com)

**Novus Europe**

12 Cambridge Science Park  
 Cambridge, UK CB4 0FQ  
 UK: p) +44-1223-426-001, f) +44-871-971-1635  
 DE: p) +49-6922-22340-60, f) +49-0800-58926-79  
 IT: p) +39-02-4032-6786, f) +39-02-4032-6340  
 FR: p) +33-1-76-77-45-30, f) +33-1-76-77-45-31  
[europe@novusbio.com](mailto:europe@novusbio.com)

