

**NBP1-47977****VMAT2 Antibody (9E11)****Unit Size**

0.1 ml

**Concentration**

Please see the vial label for concentration.

**Storage**

Store at 4C short term. Aliquot and store at -20C long term. Avoid freeze-thaw cycles.

**Applications**

WB, FLOW, ICC/IF, IHC, IHC-P

**Species**

Human

**Host**

Mouse

**Clonality**

Monoclonal

**Isotype**

IgG1

**Purity**

Protein A purified

**Preservative**

0.02% Sodium Azide

**Immunogen**

Protein expressed in 293T cell transfected with human SLC18A2 expression vector.

**Recommended Dilutions**

Western Blot 1:2000, Immunohistochemistry-Paraffin 1:50, Immunocytochemistry/Immunofluorescence 1:100, Flow Cytometry 1:100, Immunohistochemistry

**Buffer**

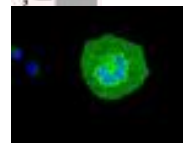
PBS (pH 7.3) containing 1% BSA, 50% glycerol

**References**Shin EJ, Duong CX, Nguyen XK, Li Z, Bing G, Bach JH, Park DH, Nakayama K, Ali SF, Kanthasamy AG, Cadet JL, Nabeshima T, Kim HC. Role of oxidative stress in methamphetamine-induced dopaminergic toxicity mediated by protein kinase C delta. *Behav Brain Res*;232(1):98-113. 2012 Apr 9. [PMID: 22512859] (WB, Mouse)**Images** (more available at [www.novusbio.com/NBP1-47977](http://www.novusbio.com/NBP1-47977))

Western Blot: VMAT2 Antibody (9E11) [NBP1-47977] - HEK293T cells were transfected with the pCMV6-ENTRY control (Left lane) or pCMV6-ENTRY VMAT2 (Right lane) cDNA for 48 hrs and lysed. Equivalent amounts of cell lysates (5 ug per lane) were s... See more at [www.novusbio.com/NBP1-47977](http://www.novusbio.com/NBP1-47977)



Immunocytochemistry/Immunofluorescence: VMAT2 Antibody (9E11) [NBP1-47977] Staining of COS7 cells transiently transfected by pCMV6-ENTRY VMAT2.



Updated 3/9/2013 2.0

**Limitations:** This product is for research use only and is not approved for use in humans or in clinical diagnosis. Products are guaranteed for six months from the date of receipt except for peptides and proteins which are guaranteed for 3 months. **For more information on our guarantee, please visit [www.novusbio.com/guarantee](http://www.novusbio.com/guarantee).**

**Novus USA**

8100 Southpark Way, A-8  
 Littleton, CO 80120  
 p) 888-506-6887  
 p) 303-730-1950  
 f) 303-730-1966  
[novus@novusbio.com](mailto:novus@novusbio.com)

**Novus Canada**

461 North Service Road West,  
 Unit B37  
 Oakville, ON L6M 2V5  
 p) 855-668-8722  
 f) 905-827-6402  
[canada@novusbio.com](mailto:canada@novusbio.com)

**Novus Europe**

12 Cambridge Science Park  
 Cambridge, UK CB4 0FQ  
 UK: p) +44-1223-426-001, f) +44-871-971-1635  
 DE: p) +49-6922-22340-60, f) +49-0800-58926-79  
 IT: p) +39-02-4032-6786, f) +39-02-4032-6340  
 FR: p) +33-1-76-77-45-30, f) +33-1-76-77-45-31  
[europe@novusbio.com](mailto:europe@novusbio.com)

