

NBP1-51841**Mitofusin-1 Antibody****Unit Size**

0.1 ml

Concentration

1.15 mg/ml

Storage

Store at 4C short term. Aliquot and store at -20C long term. Avoid freeze-thaw cycles.

Applications

ICC/IF, IHC, IHC-P

Species

Human, Mouse

Host

Rabbit

Clonality

Polyclonal

Purity

Immunogen affinity purified

Preservative

0.05% Sodium Azide

Marker

Mitochondria Marker

Immunogen

A genomic peptide made to an N-terminal region of human Mitofusin-1 (within residues 5-100). [Swiss-Prot Q8IWA4]

Recommended Dilutions

Immunocytochemistry/Immunofluorescence 1:500, Immunohistochemistry, Immunohistochemistry-Paraffin 1:100

Buffer

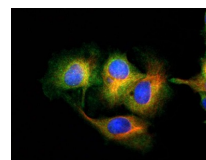
PBS

Uses

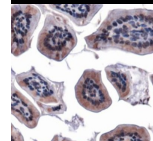
This MFN1 antibody is useful for Immunocytochemistry/Immunofluorescence, and IHC-P. Prior to immunostaining paraffin tissues, antigen retrieval with sodium citrate buffer (pH 6.0) is recommended.

Images (more available at www.novusbio.com/NBP1-51841)

Immunocytochemistry/Immunofluorescence: Mitofusin-1 Antibody [NBP1-51841] - Mitofusin-1 antibody was tested in HepG2 cells with Dylight 488 (green). Nuclei and alpha-tubulin were counterstained with DAPI (blue) and Dylight 550 (red).



Immunohistochemistry: Mitofusin-1 Antibody [NBP1-51841] - IHC staining of Mfn1 in mouse intestine.

**Notes**Manufactured by Genomic Antibody Technology™. GAT [FAQs](#)

Updated 3/9/2013 2.0

Limitations: This product is for research use only and is not approved for use in humans or in clinical diagnosis. Products are guaranteed for six months from the date of receipt except for peptides and proteins which are guaranteed for 3 months. **For more information on our guarantee, please visit www.novusbio.com/guarantee.**

Novus USA

8100 Southpark Way, A-8
 Littleton, CO 80120
 p) 888-506-6887
 p) 303-730-1950
 f) 303-730-1966
novus@novusbio.com

Novus Canada

461 North Service Road West,
 Unit B37
 Oakville, ON L6M 2V5
 p) 855-668-8722
 f) 905-827-6402
canada@novusbio.com

Novus Europe

12 Cambridge Science Park
 Cambridge, UK CB4 0FQ
 UK: p) +44-1223-426-001, f) +44-871-971-1635
 DE: p) +49-6922-22340-60, f) +49-0800-58926-79
 IT: p) +39-02-4032-6786, f) +39-02-4032-6340
 FR: p) +33-1-76-77-45-30, f) +33-1-76-77-45-31
europe@novusbio.com

