

NBP1-59071**Tapasin Antibody****Unit Size**

0.05 mg

Concentration

Lyoph

Storage

Store at -20C. Avoid freeze-thaw cycles.

Applications

WB, IHC, IHC-P

Species

Human

Host

Rabbit

Clonality

Polyclonal

Purity

Peptide affinity purified

Preservative

No Preservative

Immunogen

Synthetic peptides corresponding to TAPBP (TAP binding protein (tapasin)). The peptide sequence was selected from the C terminal of TAPBP. Peptide sequence
 GEAPPELLCLVSHFYPSGGLEVEWELRGGPGGRSQKAEGQRWLSALRHHS.

Recommended Dilutions

Immunohistochemistry, Immunohistochemistry-Paraffin, Western Blot

Buffer

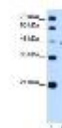
PBS & 2% Sucrose lyophilized with the antibody. Centrifuge the vial of lyoph antibody at 12,000 x g for 20 seconds. Add 50ul of distilled water. Vortex followed by centrifuge again to pellet the solution. Final concentration is 1 mg/ml in PBS buffer

Uses

This is a rabbit polyclonal antibody against TAPBP and was validated on Western Blot and immunohistochemistry-paraffin

Images

Western Blot: Tapasin Antibody [NBP1-59071] - analysis of HepG2 tissue lysate at a concentration of 0.5ug/ml.



Immunohistochemistry-Paraffin: Tapasin Antibody [NBP1-59071] - Human Skin Tissue Squamous epithelial cells (Indicated with Arrows), 4-8ug/ml.



Updated 3/9/2013 2.0

Limitations: This product is for research use only and is not approved for use in humans or in clinical diagnosis. Products are guaranteed for six months from the date of receipt except for peptides and proteins which are guaranteed for 3 months. **For more information on our guarantee, please visit www.novusbio.com/guarantee.**

Novus USA

8100 Southpark Way, A-8
 Littleton, CO 80120
 p) 888-506-6887
 p) 303-730-1950
 f) 303-730-1966
novus@novusbio.com

Novus Canada

461 North Service Road West,
 Unit B37
 Oakville, ON L6M 2V5
 p) 855-668-8722
 f) 905-827-6402
canada@novusbio.com

Novus Europe

12 Cambridge Science Park
 Cambridge, UK CB4 0FQ
 UK: p) +44-1223-426-001, f) +44-871-971-1635
 DE: p) +49-6922-22340-60, f) +49-0800-58926-79
 IT: p) +39-02-4032-6786, f) +39-02-4032-6340
 FR: p) +33-1-76-77-45-30, f) +33-1-76-77-45-31
europe@novusbio.com

