

**NBP1-69285****MTCH1 Antibody****Unit Size**

0.05 mg

**Concentration**

lyoph

**Storage**

Store at -20C. Avoid freeze-thaw cycles.

**Applications**

WB

**Species**

Human, Mouse, Rat

**Host**

Rabbit

**Clonality**

Polyclonal

**Purity**

Peptide affinity purified

**Preservative**

No Preservative

**Immunogen**

Synthetic peptides corresponding to MTCH1 (mitochondrial carrier homolog 1 (C. elegans))  
 The peptide sequence was selected from the C terminal of MTCH1. Peptide sequence  
 NNCGQLQAGLPPYSPVFKSWIHCWKYLSVQGGQLFRGSSLLFRRVSSGSCFA.

**Recommended Dilutions**

Western Blot

**Buffer**

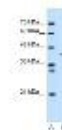
PBS & 2% Sucrose lyophilized with the antibody. Centrifuge the vial of lyoph antibody at  
 12,000 x g for 20 seconds. Add 50ul of distilled water. Vortex followed by centrifuge again to  
 pellet the solution. Final concentration is 1 mg/ml in PBS buffer

**Uses**

This is a rabbit polyclonal antibody against MTCH1 and was validated on Western blot.

**Images**

Western Blot: MTCH1 Antibody [NBP1-69285] - This  
 Anti-MTCH1 antibody was used in Western Blot of  
 HepG2 tissue lysate at a concentration of 1 ug/ml.



Updated 3/9/2013 2.0

**Limitations:** This product is for research use only and is not approved for use in humans or in clinical diagnosis. Products are guaranteed for six months from the date of receipt except for peptides and proteins which are guaranteed for 3 months. **For more information on our guarantee, please visit [www.novusbio.com/guarantee](http://www.novusbio.com/guarantee).**

**Novus USA**

8100 Southpark Way, A-8  
 Littleton, CO 80120  
 p) 888-506-6887  
 p) 303-730-1950  
 f) 303-730-1966  
[novus@novusbio.com](mailto:novus@novusbio.com)

**Novus Canada**

461 North Service Road West,  
 Unit B37  
 Oakville, ON L6M 2V5  
 p) 855-668-8722  
 f) 905-827-6402  
[canada@novusbio.com](mailto:canada@novusbio.com)

**Novus Europe**

12 Cambridge Science Park  
 Cambridge, UK CB4 0FQ  
 UK: p) +44-1223-426-001, f) +44-871-971-1635  
 DE: p) +49-6922-22340-60, f) +49-0800-58926-79  
 IT: p) +39-02-4032-6786, f) +39-02-4032-6340  
 FR: p) +33-1-76-77-45-30, f) +33-1-76-77-45-31  
[europe@novusbio.com](mailto:europe@novusbio.com)

