

NBP1-60115**SLC14A1 Antibody****Unit Size**

0.05 mg

Concentration

Lyoph

Storage

Store at -20C. Avoid freeze-thaw cycles.

Applications

WB, IHC, IHC-P

Species

Human

Host

Rabbit

Clonality

Polyclonal

Purity

Peptide affinity purified

Preservative

No Preservative

Immunogen

Synthetic peptides corresponding to SLC14A1(solute carrier family 14 (urea transporter), member 1 (Kidd blood group)) The peptide sequence was selected from the C terminal of SLC14A1. Peptide sequence LSSPLMCLHAAIGSLLGIAAGLSLSAPFENIYFGLWGF

Recommended Dilutions

Immunohistochemistry, Immunohistochemistry-Paraffin, Western Blot

Buffer

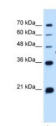
PBS & 2% Sucrose lyophilized with the antibody. Centrifuge the vial of lyoph antibody at 12,000 x g for 20 seconds. Add 50ul of distilled water. Vortex followed by centrifuge again to pellet the solution. Final concentration is 1 mg/ml in PBS buffer

Uses

This is a rabbit polyclonal antibody against SLC14A1 and was validated on Western Blot and immunohistochemistry-paraffin

Images

Western Blot: SLC14A1 Antibody [NBP1-60115] - Titration: 0.25ug/ml Positive Control: Jurkat cell lysate.



Immunohistochemistry-Paraffin: SLC14A1 Antibody [NBP1-60115] - Human kidney Tissue, antibody concentration 4-8ug/ml. Cells with positive label: renal corpuscle cells (indicated with arrows) 400X magnification.



Updated 3/9/2013 2.0

Limitations: This product is for research use only and is not approved for use in humans or in clinical diagnosis. Products are guaranteed for six months from the date of receipt except for peptides and proteins which are guaranteed for 3 months. **For more information on our guarantee, please visit www.novusbio.com/guarantee.**

Novus USA

8100 Southpark Way, A-8
 Littleton, CO 80120
 p) 888-506-6887
 p) 303-730-1950
 f) 303-730-1966
novus@novusbio.com

Novus Canada

461 North Service Road West,
 Unit B37
 Oakville, ON L6M 2V5
 p) 855-668-8722
 f) 905-827-6402
canada@novusbio.com

Novus Europe

12 Cambridge Science Park
 Cambridge, UK CB4 0FQ
 UK: p) +44-1223-426-001, f) +44-871-971-1635
 DE: p) +49-6922-22340-60, f) +49-0800-58926-79
 IT: p) +39-02-4032-6786, f) +39-02-4032-6340
 FR: p) +33-1-76-77-45-30, f) +33-1-76-77-45-31
europe@novusbio.com

