

NBP1-77203**TLR8 Antibody****Unit Size**

0.1 mg

Concentration

1 mg/ml

Storage

Store at 4C short term. Aliquot and store at -20C long term. Avoid freeze-thaw cycles.

Applications

WB, ELISA, ICC/IF

Species

Human, Mouse

Host

Rabbit

Clonality

Polyclonal

Purity

Affinity purified

Preservative

0.02% Sodium Azide

Immunogen

Antibody was raised against a peptide corresponding to 16 amino acids near the middle of human TLR8.

Recommended Dilutions

ELISA, Immunocytochemistry/Immunofluorescence, Western Blot

Buffer

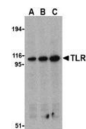
PBS containing 0.02% sodium azide.

Uses

TLR8 antibody can be used for detection of TLR8 by Western blot at 0.5 to 2 mg/ml.

Images

Western Blot: TLR8 Antibody [NBP1-77203] - Daudi cell lysates with TLR8 antibody at (A) 0.5, (B) 1, and (C) 2 ug/ml.



Immunocytochemistry/Immunofluorescence: TLR8 Antibody [NBP1-77203] - Daudi cells with TLR8 antibody at 2 ug/ml.



Updated 3/9/2013 2.0

Limitations: This product is for research use only and is not approved for use in humans or in clinical diagnosis. Products are guaranteed for six months from the date of receipt except for peptides and proteins which are guaranteed for 3 months. **For more information on our guarantee, please visit www.novusbio.com/guarantee.**

Novus USA

8100 Southpark Way, A-8
 Littleton, CO 80120
 p) 888-506-6887
 p) 303-730-1950
 f) 303-730-1966
novus@novusbio.com

Novus Canada

461 North Service Road West,
 Unit B37
 Oakville, ON L6M 2V5
 p) 855-668-8722
 f) 905-827-6402
canada@novusbio.com

Novus Europe

12 Cambridge Science Park
 Cambridge, UK CB4 0FQ
 UK: p) +44-1223-426-001, f) +44-871-971-1635
 DE: p) +49-6922-22340-60, f) +49-0800-58926-79
 IT: p) +39-02-4032-6786, f) +39-02-4032-6340
 FR: p) +33-1-76-77-45-30, f) +33-1-76-77-45-31
europe@novusbio.com

