

NBP1-77148**ST2 Antibody****Unit Size**

0.1 mg

Concentration

1 mg/ml

Storage

Store at 4°C short term. Aliquot and store at -20°C long term. Avoid freeze-thaw cycles.

Applications

WB, ELISA, IHC, IHC-P

Species

Human, Mouse

Host

Rabbit

Clonality

Polyclonal

Purity

Peptide affinity purified

Preservative

0.02% Sodium Azide

Immunogen

Antibody was raised against a synthetic peptide corresponding to 16 amino acids at the amino-terminus of mouse ST2 (BAA02854). This peptide is common to all three known ST2 isoforms.

Recommended Dilutions

ELISA, Immunohistochemistry, Immunohistochemistry-Paraffin 2 ug/ml, Western Blot 1-2 ug/ml

Buffer

PBS

Uses

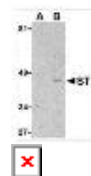
ST2 antibody can be used for the detection of ST2 by Western blot at 1 to 2 mg/ml. Mouse kidney cell lysate can be used as positive control. Anti-ST2 is human and mouse reactive.

References (more available at www.novusbio.com/NBP1-77148)

Lanahan A, Williams JB, Sanders LK, et al. Growth factor-induced delayed early response genes. . Mol Cell Biol. ; 12:3919-29. 1992. [PMID: 1508193]

Images

Western Blot: ST2 Antibody [NBP1-77148] - Mouse kidney lysate with ST2 antibody at 1 µg/ml in the presence (lane A) or absence (lane B) of 1 µg blocking peptide.



Immunohistochemistry-Paraffin: ST2 Antibody [NBP1-77148] - Mouse kidney tissue with ST2 antibody at 2 ug/ml.

Updated 3/9/2013 2.0

Limitations: This product is for research use only and is not approved for use in humans or in clinical diagnosis. Products are guaranteed for six months from the date of receipt except for peptides and proteins which are guaranteed for 3 months. **For more information on our guarantee, please visit www.novusbio.com/guarantee.**

Novus USA
 8100 Southpark Way, A-8
 Littleton, CO 80120
 p) 888-506-6887
 p) 303-730-1950
 f) 303-730-1966
novus@novusbio.com
Novus Canada
 461 North Service Road West,
 Unit B37
 Oakville, ON L6M 2V5
 p) 855-668-8722
 f) 905-827-6402
canada@novusbio.com
Novus Europe
 12 Cambridge Science Park
 Cambridge, UK CB4 0FQ
 UK: p) +44-1223-426-001, f) +44-871-971-1635
 DE: p) +49-6922-22340-60, f) +49-0800-58926-79
 IT: p) +39-02-4032-6786, f) +39-02-4032-6340
 FR: p) +33-1-76-77-45-30, f) +33-1-76-77-45-31
europe@novusbio.com
