

NBP1-78071**UBC6 Antibody****Unit Size**

0.1 mg

Concentration

0.64 mg/ml

Storage

Store at 4°C short term. Aliquot and store at -20°C long term. Avoid freeze-thaw cycles.

Applications

WB, ELISA

Species

Human, Mouse, Rat

Host

Rabbit

Clonality

Polyclonal

Purity

Immunogen affinity purified

Preservative

0.01% Sodium Azide

Specificity/Sensitivity

This affinity purified antibody is directed against human Ube2j2 protein. A BLAST analysis was used to suggest cross-reactivity with Ube2j2 protein from human

Immunogen

This affinity purified antibody was prepared from whole rabbit serum produced by repeated immunizations with a synthetic peptide corresponding to an internal region of the human Ube2j2 protein.

Recommended Dilutions

ELISA 1:5000 - 1:25000, Western Blot 1:500 - 1:3000

Buffer

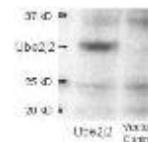
0.02 M Potassium Phosphate, 0.15 M Sodium Chloride, pH 7.2 Stabilizer: None

Uses

This affinity purified antibody has been tested for use in ELISA, western blotting and immunoprecipitation. Expect a band approximately 29 kDa in size corresponding - ube2j2 protein by western blotting in the appropriate cell lysate or extract.

Images

Western Blot: UBC6 Antibody [NBP1-78071] - expressing Myc-Ube2j2 (Lane 1). Lane 2 contains lysate from mock-transfected 293 cells.



Updated 3/9/2013 2.0

Limitations: This product is for research use only and is not approved for use in humans or in clinical diagnosis. Products are guaranteed for six months from the date of receipt except for peptides and proteins which are guaranteed for 3 months. **For more information on our guarantee, please visit www.novusbio.com/guarantee.**

Novus USA

8100 Southpark Way, A-8
 Littleton, CO 80120
 p) 888-506-6887
 p) 303-730-1950
 f) 303-730-1966
novus@novusbio.com

Novus Canada

461 North Service Road West,
 Unit B37
 Oakville, ON L6M 2V5
 p) 855-668-8722
 f) 905-827-6402
canada@novusbio.com

Novus Europe

12 Cambridge Science Park
 Cambridge, UK CB4 0FQ
 UK: p) +44-1223-426-001, f) +44-871-971-1635
 DE: p) +49-6922-22340-60, f) +49-0800-58926-79
 IT: p) +39-02-4032-6786, f) +39-02-4032-6340
 FR: p) +33-1-76-77-45-30, f) +33-1-76-77-45-31
europe@novusbio.com

