

NBP1-77939**ECT2 [p Thr790] Antibody****Unit Size**

0.1 mg

Concentration

1.1 mg/ml

Storage

Store at 4C short term. Aliquot and store at -20C long term. Avoid freeze-thaw cycles.

Applications

WB, ELISA

Species

Human, Mouse, Rat, Canine, Chicken, Primate, Zebrafish

Host

Rabbit

Clonality

Polyclonal

Purity

Immunogen affinity purified

Preservative

0.01% Sodium Azide

Specificity/Sensitivity

This antibody is directed against the phosphorylated form of human ECT2 protein at the pT790 residue.

Immunogen

This affinity purified antibody was prepared from whole rabbit serum produced by repeated immunizations with a synthetic peptide corresponding to amino acids 785-795 of human ECT2 protein.

Recommended Dilutions

ELISA 1:10000 - 1:40000, Western Blot 1:1000 - 1:4000

Buffer

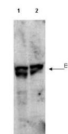
0.02 M Potassium Phosphate, 0.15 M Sodium Chloride, pH 7.2 Stabilizer: None

Uses

This affinity-purified antibody has been tested for use in ELISA, western blot and immunoprecipitation. Expect a band approximately 101 kDa in size by western blotting in the appropriate cell lysate or extract. Less than 2% reactivity is observed against the non-phosphorylated form of the immunizing peptide. This antibody is believed - be phospho specific for ECT2 phosphorylated at the pT790 resid... See more at www.novusbio.com/NBP1-77939

Images

Western Blot: ECT2 [p Thr790] Antibody [NBP1-77939] - Shows detection of endogenous phosphorylated ECT2 (arrowhead) present in cell lysates from interphase (lane 1) and mitotic (lane 2) HeLa cells. Despite specific staining of interphase cel... See more at www.novusbio.com/NBP1-77939



Updated 3/9/2013 2.0

Limitations: This product is for research use only and is not approved for use in humans or in clinical diagnosis. Products are guaranteed for six months from the date of receipt except for peptides and proteins which are guaranteed for 3 months. **For more information on our guarantee, please visit www.novusbio.com/guarantee.**

Novus USA

8100 Southpark Way, A-8
 Littleton, CO 80120
 p) 888-506-6887
 p) 303-730-1950
 f) 303-730-1966
novus@novusbio.com

Novus Canada

461 North Service Road West,
 Unit B37
 Oakville, ON L6M 2V5
 p) 855-668-8722
 f) 905-827-6402
canada@novusbio.com

Novus Europe

12 Cambridge Science Park
 Cambridge, UK CB4 0FQ
 UK: p) +44-1223-426-001, f) +44-871-971-1635
 DE: p) +49-6922-22340-60, f) +49-0800-58926-79
 IT: p) +39-02-4032-6786, f) +39-02-4032-6340
 FR: p) +33-1-76-77-45-30, f) +33-1-76-77-45-31
europe@novusbio.com

