

NBP1-77938**MLF1 Interacting Protein [p Thr78] Antibody****Unit Size**

0.1 mg

Concentration

1.06 mg/ml

Storage

Store at 4°C short term. Aliquot and store at -20°C long term. Avoid freeze-thaw cycles.

Applications

WB, ELISA, ICC/IF, IHC, IHC-P

Species

Human, Bovine, Canine, Primate

Host

Rabbit

Clonality

Polyclonal

Purity

Immunogen affinity purified

Preservative

0.01% Sodium Azide

Specificity/Sensitivity

This antibody is specific for human Mlf1 phospho T78 and surrounding amino acids.

Immunogen

This affinity purified antibody was prepared from whole rabbit serum produced by repeated immunizations with a synthetic peptide corresponding to amino acids surrounding Thr78 of human MLF1IP protein. The immunogen peptide is phosphorylated at Thr78.

Recommended Dilutions

ELISA 1:5000 - 1:25000, Immunocytochemistry/Immunofluorescence, Immunohistochemistry 20 ug/ml, Immunohistochemistry-Paraffin, Western Blot 1:500 - 1:2000

Buffer

0.02 M Potassium Phosphate, 0.15 M Sodium Chloride, pH 7.2 Stabilizer: None

Uses

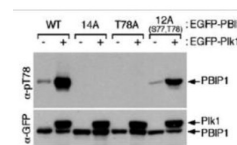
Expect a band approximately 65 kDa in size corresponding - MLF1IP protein by western blotting in the appropriately stimulated tissue, cell lysate or extract.

References

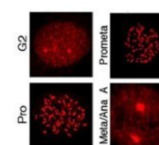
Huang Z, Zhu W, Szekeres G et al. Self-regulated Plk1 recruitment to kinetochores by the Plk1-PBIP1 interaction is critical for proper chromosome segregation. Mol Cell 2006 Nov [PMID: 17081991]

Images (more available at www.novusbio.com/NBP1-77938)

Western Blot: MLF1 Interacting Protein [p Thr78] Antibody [NBP1-77938] - Shows detection of MLF1IP phosphorylated at Thr78. HeLa cells were co-infected with the indicated adenoviruses expressing GFP-tagged Plk1 or PBIP1. Blots were probed with... See more at www.novusbio.com/NBP1-77938



Immunocytochemistry/Immunofluorescence: MLF1 Interacting Protein [p Thr78] Antibody [NBP1-77938] - shows detection of MLF1IP pT78 at the kinetochores of HeLa cells in different phases of the cell cycle. Fluorescent signals were detectable at... See more at www.novusbio.com/NBP1-77938



Updated 3/9/2013 2.0

Limitations: This product is for research use only and is not approved for use in humans or in clinical diagnosis. Products are guaranteed for six months from the date of receipt except for peptides and proteins which are guaranteed for 3 months. **For more information on our guarantee, please visit www.novusbio.com/guarantee.**

Novus USA

8100 Southpark Way, A-8
 Littleton, CO 80120
 p) 888-506-6887
 p) 303-730-1950
 f) 303-730-1966
novus@novusbio.com

Novus Canada

461 North Service Road West,
 Unit B37
 Oakville, ON L6M 2V5
 p) 855-668-8722
 f) 905-827-6402
canada@novusbio.com

Novus Europe

12 Cambridge Science Park
 Cambridge, UK CB4 0FQ
 UK: p) +44-1223-426-001, f) +44-871-971-1635
 DE: p) +49-6922-22340-60, f) +49-0800-58926-79
 IT: p) +39-02-4032-6786, f) +39-02-4032-6340
 FR: p) +33-1-76-77-45-30, f) +33-1-76-77-45-31
europe@novusbio.com

