

**NBP1-77400****EHMT1 Antibody****Unit Size**

0.1 ml

**Concentration**

0.4 mg/ml

**Storage**

Store at 4C short term. Aliquot and store at -20C long term. Avoid freeze-thaw cycles.

**Applications**

ICC/IF, IHC, IHC-P

**Species**

Human, Mouse

**Host**

Rabbit

**Clonality**

Polyclonal

**Purity**

Immunogen affinity purified

**Preservative**

0.05% Sodium Azide

**Immunogen**

A genomic peptide made to an N-terminal region of the human EHMT1 protein (within residues 20-200). [Swiss-Prot Q9H9B1]

**Recommended Dilutions**

Immunocytochemistry/Immunofluorescence 1:50-1:100, Immunohistochemistry, Immunohistochemistry-Paraffin 1:150

**Buffer**

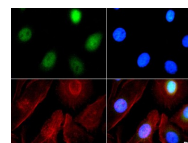
PBS, 30% glycerol

**Uses**

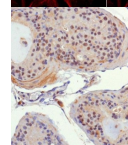
This EHMT1 antibody is useful for ICC/IF and Immunohistochemistry-paraffin sections. Prior to immunostaining paraffin tissues, antigen retrieval with sodium citrate buffer (pH 6.0) is recommended.

**Images**

Immunocytochemistry/Immunofluorescence: EHMT1 Antibody [NBP1-77400] - Antibody was tested at 1:200 in HeLa cells with FITC (green). Nuclei and actin were counterstained with Dapi (blue) and Phalloidin (red).



Immunohistochemistry: EHMT1 Antibody [NBP1-77400] - IHC analysis of EHMT1 in mouse prostate using DAB with hematoxylin counterstain.

**Notes**Manufactured by Genomic Antibody Technology™. GAT [FAQs](#)

Updated 3/9/2013 2.0

**Limitations:** This product is for research use only and is not approved for use in humans or in clinical diagnosis. Products are guaranteed for six months from the date of receipt except for peptides and proteins which are guaranteed for 3 months. **For more information on our guarantee, please visit [www.novusbio.com/guarantee](http://www.novusbio.com/guarantee).**

**Novus USA**
 8100 Southpark Way, A-8  
 Littleton, CO 80120  
 p) 888-506-6887  
 p) 303-730-1950  
 f) 303-730-1966  
[novus@novusbio.com](mailto:novus@novusbio.com)
**Novus Canada**
 461 North Service Road West,  
 Unit B37  
 Oakville, ON L6M 2V5  
 p) 855-668-8722  
 f) 905-827-6402  
[canada@novusbio.com](mailto:canada@novusbio.com)
**Novus Europe**
 12 Cambridge Science Park  
 Cambridge, UK CB4 0FQ  
 UK: p) +44-1223-426-001, f) +44-871-971-1635  
 DE: p) +49-6922-22340-60, f) +49-0800-58926-79  
 IT: p) +39-02-4032-6786, f) +39-02-4032-6340  
 FR: p) +33-1-76-77-45-30, f) +33-1-76-77-45-31  
[europe@novusbio.com](mailto:europe@novusbio.com)
